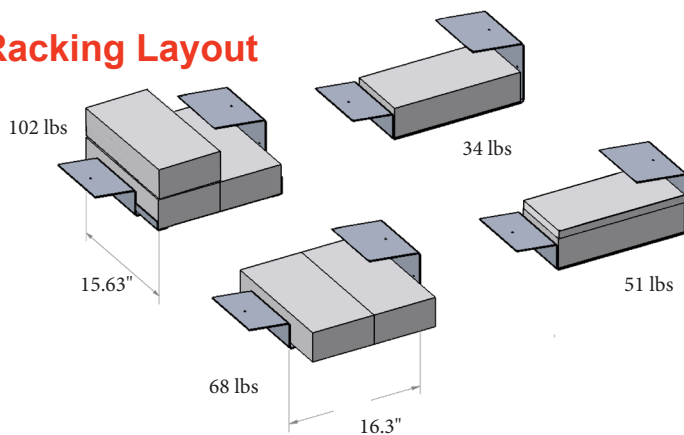


Atlantis Ballasted Roof Mount

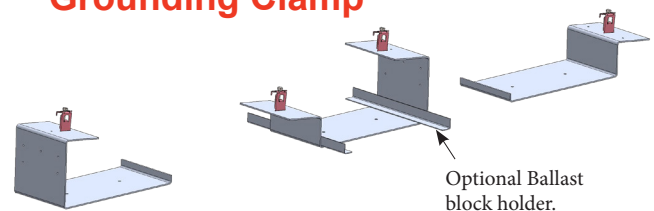
Innovative Racking System For Your Roof

The Atlantis non-penetrating ballasted roof mount solution features integrated grounding, up to 150 mph wind load, and UL 467 Certification. The Atlantis's simple design makes it a leader in reduced installation time and balance of system costs. Modular assembly allows for avoidance of roof top obstructions and efficient utilization of available space. The lightweight design results in reduced shipping cost.

Racking Layout



Grounding Clamp



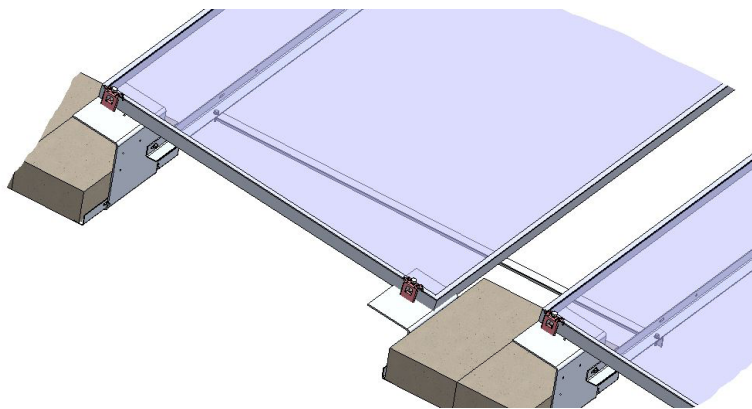
Key Features

- Wind loading up to 150 mph
- Anchor attachment options
- Integrated grounding
- UL 467 Clamps
- Minimal installation effort
- Aluminum base pans
- Low PSF roof load - starts at 3 psf
- Stackable design maximizes container load
- Standard tilt angle of 7°
- Custom tilt angles available
- Optional N-S and E-W wireways

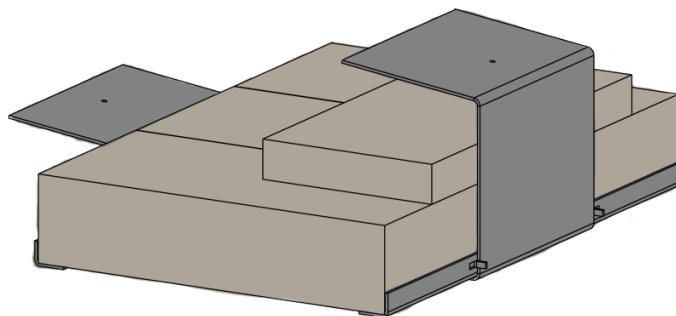
"Your Single Solar Source"

Atlantis

Ballasted Roof Mount



Optional N-S and E-W wireways shown



BALLAST BLOCK CONFIGURATIONS FOR 17-134LBS

Technical Specifications

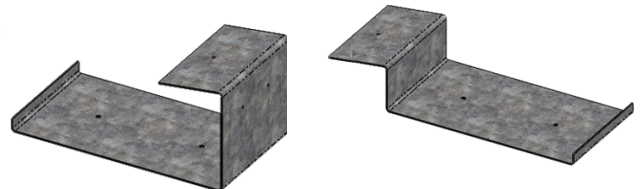
Application	Flat Roof
Foundation	Non-Penetrating
Module Orientation	Landscape
Module Compatibility	Height 31 - 50 mm Width 982 - 1001 mm
	Length (60 Cell) 1638 - 1675 mm Length (72 Cell) 1950 - 1990 mm
Available Tilt Angles	7°
Wind Load	Up to 150 mph *
Snow Load	Up to 60 psf *
Roof Load	3 - 5 psf
Material Composition	Aluminum
Grounding	Integrated E/W & N/S
Certifications	UL 467
Warranty	25 Years
Manufacturing	Made in USA

Major Components

1. North & South Pans

South and North pans for reduced footprint and neat end of rows. Allows for more solar on rooftops with low space availability. Complete electrical bonding at all connections points.

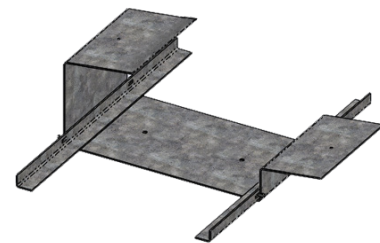
1.



2. Mid Pans

Lightweight aluminum mounting base. Complete electrical bonding at all connection points per base.

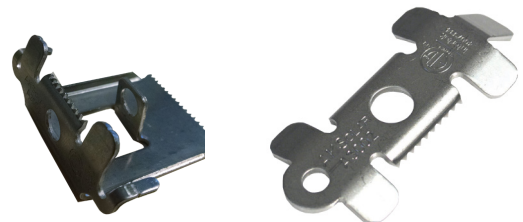
2.



3. Mid & End Clamps

Integrated grounding design reduces grounding effort. UL 467 Certified module clamps fit any size module.

3.



*Snow loads are ground snow loads estimated at 7 deg.
*Wind loads are estimated at 7 deg.
*Loading is single factor snow only or wind only.
*All specifications subject to change without notice.